



Datenblatt - Fiche technique - Data sheet

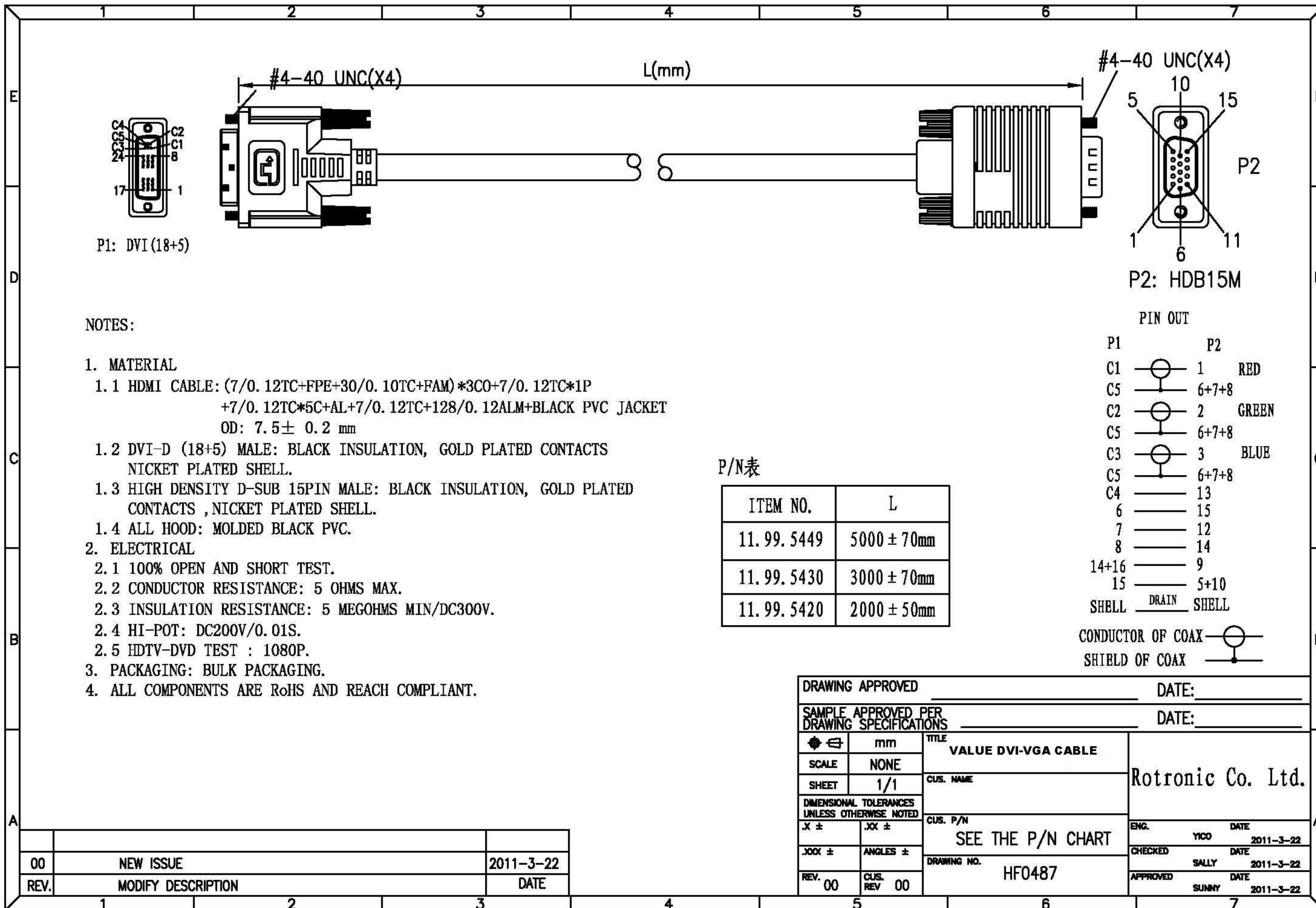
11.99.5430



VALUE DVI-VGA Kabel, DVI (12+5) ST - VGA ST, 3,0m

VALUE Câble DVI, DVI (12+5) M-VGA M, 3,0m

VALUE DVI Cable, DVI (18+5) - HD15, M/M, 3 m



P1: DVI (18+5)

P2: HDB15M

NOTES:

1. MATERIAL

1.1 HDMI CABLE: (7/0.12TC+FPE+30/0.10TC+FAM)*3CO+7/0.12TC*1P
 +7/0.12TC*5C+AL+7/0.12TC+128/0.12ALM+BLACK PVC JACKET
 OD: 7.5 ± 0.2 mm

1.2 DVI-D (18+5) MALE: BLACK INSULATION, GOLD PLATED CONTACTS
 NICKET PLATED SHELL.

1.3 HIGH DENSITY D-SUB 15PIN MALE: BLACK INSULATION, GOLD PLATED
 CONTACTS ,NICKET PLATED SHELL.

1.4 ALL HOOD: MOLDED BLACK PVC.

2. ELECTRICAL

2.1 100% OPEN AND SHORT TEST.

2.2 CONDUCTOR RESISTANCE: 5 OHMS MAX.

2.3 INSULATION RESISTANCE: 5 MEGOHMS MIN/DC300V.

2.4 HI-POT: DC200V/0.01S.

2.5 HDTV-DVD TEST : 1080P.

3. PACKAGING: BULK PACKAGING.

4. ALL COMPONENTS ARE RoHS AND REACH COMPLIANT.

PIN OUT

| P1 | P2 | |
|-------------------|-------|-------|
| C1 | 1 | RED |
| C5 | 6+7+8 | |
| C2 | 2 | GREEN |
| C5 | 6+7+8 | |
| C3 | 3 | BLUE |
| C5 | 6+7+8 | |
| C4 | 13 | |
| 6 | 15 | |
| 7 | 12 | |
| 8 | 14 | |
| 14+16 | 9 | |
| 15 | 5+10 | |
| SHELL | DRAIN | SHELL |
| CONDUCTOR OF COAX | | |
| SHIELD OF COAX | | |

P/N表

| ITEM NO. | L |
|------------|-------------|
| 11.99.5449 | 5000 ± 70mm |
| 11.99.5430 | 3000 ± 70mm |
| 11.99.5420 | 2000 ± 50mm |

| | | | |
|---|---------------------|-------------------|-------------------------------|
| DRAWING APPROVED _____ | | DATE: _____ | |
| SAMPLE APPROVED PER DRAWING SPECIFICATIONS _____ | | DATE: _____ | |
| mm | TITLE | Rotronic Co. Ltd. | |
| SCALE | VALUE DVI-VGA CABLE | | |
| SHEET | CUS. NAME | | |
| DIMENSIONAL TOLERANCES UNLESS OTHERWISE NOTED | | CUS. P/N | ENG. YICO DATE 2011-3-22 |
| .X ± | .XX ± | SEE THE P/N CHART | CHECKED SALLY DATE 2011-3-22 |
| .XX ± | ANGLES ± | DRAWING NO. | APPROVED SUNNY DATE 2011-3-22 |
| REV. 00 | CUS. REV 00 | HF0487 | |

| REV. | MODIFY DESCRIPTION | DATE |
|------|--------------------|-----------|
| 00 | NEW ISSUE | 2011-3-22 |